



**FOTON**  
福田汽车

1000万  
辆

公司名称：北汽福田汽车股份有限公司

地址：北京市昌平区沙河镇沙阳路

邮编：102206

公司网址：[www.foton.com.cn](http://www.foton.com.cn)

投资者热线：010-80716459

CONTENTS  
目录

/

2022 12  
2006

600166@foton.com.cn  
010-80716495

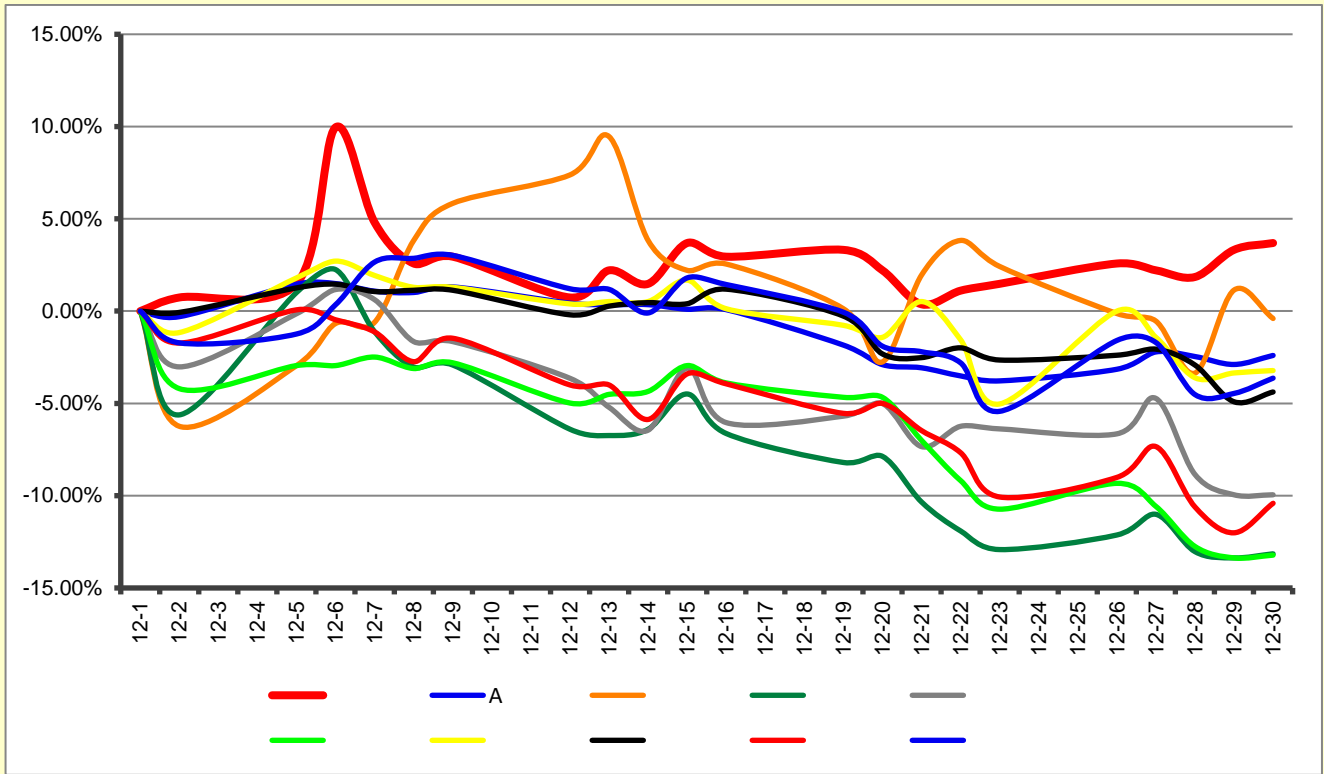




K




(12 1 -12 31 )



A

2022

12

6



**2023**

2022 12 17

2023

616

2022

2023

2022

2023 -2025



**2022**

2022 12 23

2022

2022

2022

19

2003

2008

2022

VAN

G20

APEC

2022

2023

2022



2022

12

9

2022

**4 50**

2019

2019

4

3

4

2018

2021

9

4

50

2019

75%

2020

55%

2021

2

5

2022

7

10

2022

A15L 660

TA

A

+

99.7%

70%

2-3L

2019

EST-A

EST

GTL

2022

2

X

A

2022

**2023**

2022

2022

12

10

12 15

2023

23

TCO

Pro

M

2022

VAN

2023

100.5kwh 86.5kwh

20%

EHB EPS

360

HS1 750

HS1 600

850km E-CVT

EST 6 4 HEV

2200km

8 4 PHEV

1100km

23

FIA

26



				www.sse.com.cn 2022-121
				www.sse.com.cn 2022-122
				www.sse.com.cn 2022-126
				www.sse.com.cn 2022-127





2022 11

				5632	7234	95083	176082	-46.00%	3636	7340	88923	165383	-46.23%
				2847	3092	50013	102654	-51.28%	964	2395	44383	95293	-53.42%
				18962	23021	286001	388165	-26.32%	21470	24365	260526	372894	-30.13%
				242	76	3402	1446	135.27%	298	72	3937	1374	186.54%
				49	86	1276	1036	23.17%	61	73	1335	919	45.27%
				2840	3439	34630	39529	-12.39%	3232	3809	35144	41291	-14.89%
		292	579	3734	6392	-41.58%	279	505	3604	6308	-42.87%		
		28017	34435	424126	612650	-30.77%	28976	36164	393469	588169	-33.10%		
		2385	671	18860	6854	175.17%	3134	728	20903	6803	207.26%		
			10214	15218	148609	268922	-44.74%	11130	14443	148868	265012	-43.83%	
		5604	5131	50513	59630	-15.29%	5695	6134	50126	64662	-22.48%		
		15818	20349	199122	328552	-39.39%	16825	20577	198994	329674	-39.64%		

# 沪市动态

2023

5.01

CA e

CA

2022

2022

2022

CA

3

2022

2023

5

2023 1 6

<http://www.sse.com.cn>

388

200127

12 4

2022

2022

12 4

<http://www.lcab.com.cn/>

2022



2.

3.

4.

12 4 10

1

2

3

# 学习宣传贯彻党的二十大精神 推动全面贯彻实施宪法



2022年是现行宪法颁布施行40周年 12月4日是第九个国家宪法日

我国现行宪法于1982年12月4日由第五届全国人民代表大会第五次会议通过并公布施行,历经5次修改,内容包括序言、总纲、公民的基本权利与义务、国家机构、国旗国歌国徽首都五个部分,共143条。

中共北京市委全面依法治市委员会守法普法协调小组  
北京市司法局

# 汽车板块动态

12 14

300750

23,094.66

3.73%

6

51%

49%

48%

12 8

+

B

45

B

130

B

24

11

-

IPO

2016 5

ES8

2017

ES8

2018 5

ES6

2019

ES6

2020

EC6

2021 3

2021 3

09866.HK 2022 2

2021 5

2021 5

2024 5

ES8 ES6 EC6 ET7

MPV SUV

JAC

2016 9

2017 5

2022

12

23

6

2017 12

2018 4

E20X

2020 6

50%

50%

75% 25%

75%

2020 12

12 21

ECX

ECXWW

IPO

5

COVA

COVA Acquisition Corp.

12 20

34

COVA

3

Luminar

1.1

38.2

COVA

89%

IPO

2015

2017 3

70%

30%

Tier 1

Tier 2

Tier1

Tier1

Tier2

Tier1

12

Smart

-

2020-2030

4.7

4.6

12

1050

4000

1770

6.5

150

2022

2024

5.67/1.76

8.38/2.79

13.84/4.79

2024



30%

2021

2020

8.83

2021

567.4

IPO

**IPO**

10

31

IPO

2021

28.68

10.1

2022

88.28

7.59

8

5

Pre-A

5.6%

6

25

001

11

001

1.1

447.3%

8.8%

5

7

7

IPO



2022 11

	145070	135869	1286971	1169264	10.07%
	87560	122510	990081	1118624	-11.49%
	136931	114395	1507364	1424334	5.83%
	229942	97667	1628005	636371	155.83%
	28017	34435	424126	612650	-30.77%
	23298	30016	253398	304900	-16.89%
	45314	48923	457527	482200	-5.12%
	12252	14126	160043	413883	-61.33%
	10163	13038	120518	169653	-28.96%
	2591	2090	22263	27272	-18.37%
	3586	3000	25429	35206	-27.77%

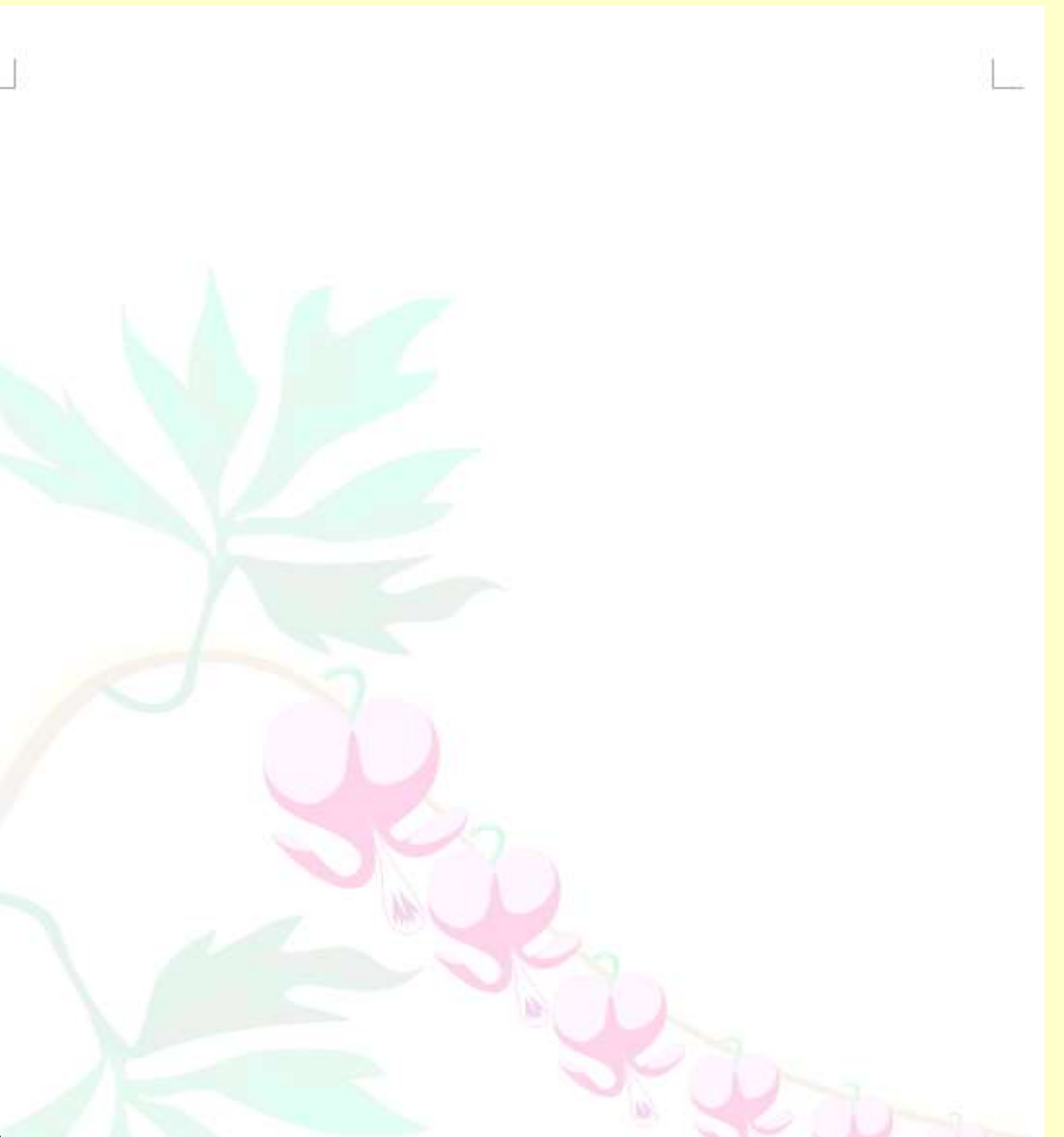
	481679	593514	4666853	4714207	-1.00%
	184801	188030	2090357	2122511	-1.51%
	190267	223946	2227236	1908082	16.73%

2022

12

27

	145070	135869	1286971	1169264	10.07%
	87560	122510	990081	1118624	-11.49%
	28017	34435	424126	612650	-30.77%
	229942	97667	1628005	636371	155.83%
	23298	30016	253398	304900	-16.89%



	95580	112070	1033404	901552	46.40%	14.63%
	109297	56625	868719	355408	53.36%	144.43%
	54582	471085	20390	291253	1.35%	-93.00%
	6776	16136	97069	114102	9.80%	-14.93%
	0	24	50	277	0.01%	-81.95%
	0	205	50	253	0.22%	-80.24%
	91	0	1126	298	0.93%	277.85%

	17695	12122	199987	146162	8.98%	36.83%
	7078	894	17346	20182	1.07%	-14.05%
	2050	2677	24797	38544	1.93%	-35.67%
	833	17600	2377	17946	0.16%	-86.75%
	421	561	3072	6078	13.80%	-49.46%
	243	543	2998	5586	0.71%	-46.33%

	76992	99754	993845	860368	44.62%	15.51%
	66952	85564	720084	796549	72.73%	-9.60%
	62965	729349	71724	816073	4.76%	-91.21%
	113567	40148	741940	260781	45.57%	184.51%
	16937	18999	146513	194621	32.02%	-24.72%
	8786	5041	71427	47625	28.19%	49.98%
	2170	1505	19136	20917	85.95%	-8.51%
	49	36	734	757	0.17%	-3.04%

	987	22910	2351	26921	0.16%	-91.27%
	0	0	2	49	0.00%	-95.92%

	140024	132428	1115308	1114670	0.06%
	18928	34140	346551	427649	-18.96%

1581# 0 0 1



2022 22

2015 2020 2

2022 10 21

2017

816.28

2022 11 4

11 5

2022

12

30

2014 12 1

2022 6 2

2014 1 5

2020 4 14

2.2 3.1.4 3.2.2

17.1

2022 1 29

2021

2021

-14,500 -11,500

2022 4 29

2021

2021 -28,100

2021

2021 -28,086

93.70%

2.1.1 2.1.4 2.1.5

5.1.4 5.1.5

2.1.2 4.3.1 4.3.5

4.3.8 5.1.10

13.2.2