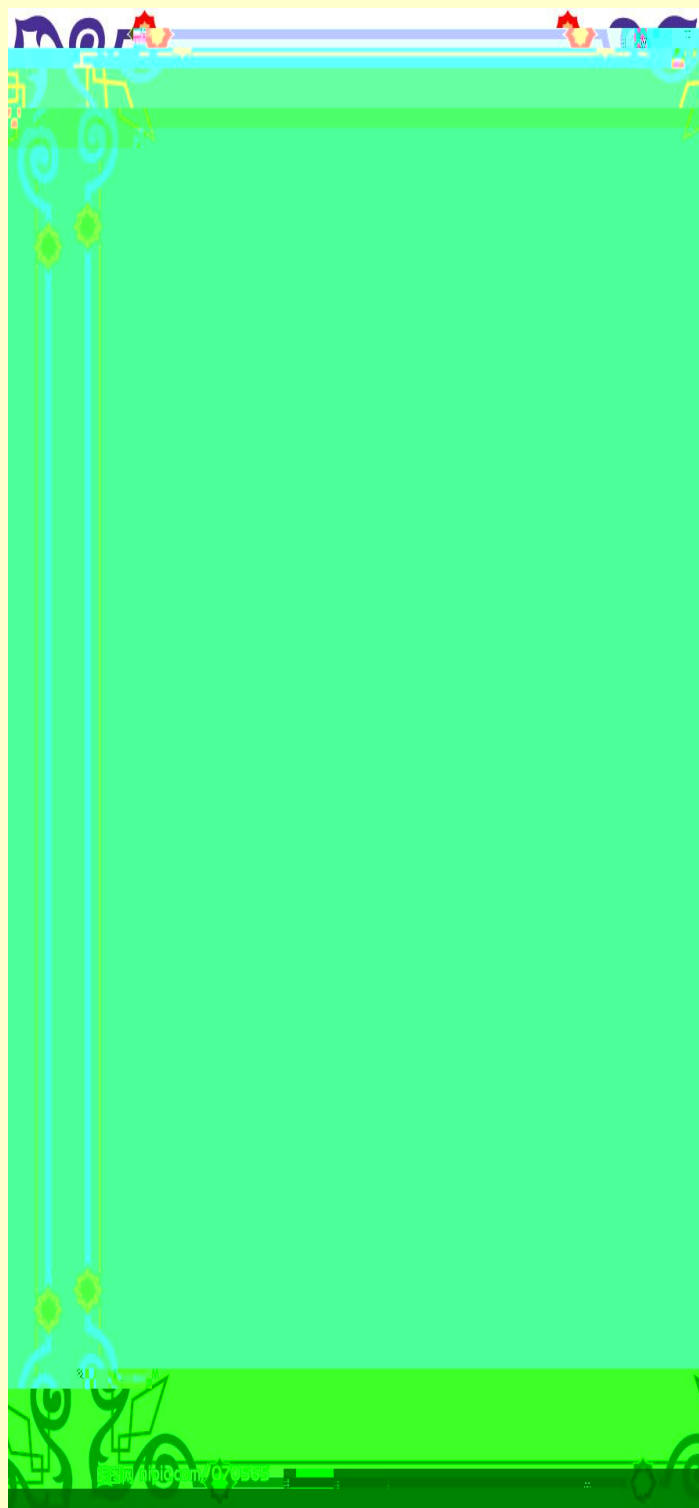


FOTON

1000万

辆







2022 7 5

2021 863  
2022 2006  
2020 440  
40  
6 385L  
20  
-35  
55 40 2.5  
1487

253

7 22

( )

( )

" "

2014

903

4 (3940 )

1000

6

0.1Bar

ABS

BJ6906

10

15%

10%

2008

2022

G20

18

2022

515

132.52

751

2003

2022 7 15

2022

70

100

2022

P2+

2022

7

6

3 17

2022

2018 8

2022

2021

8

70MPa

U

7.6%

188

2020 6

10.5

48

6 28

2021 5

120

100

2021 12

P2+

15

2018

25



				www.sse.com.cn 2022-072
				www.sse.com.cn 2022-073
				www.sse.com.cn 2022-074
				www.sse.com.cn 2022-075
				www.sse.com.cn 2022-076
				www.sse.com.cn 2022-077
				www.sse.com.cn 2022-078
				www.sse.com.cn 2022-079





2022 6

			10431	20703	58259	134277	-56.61%	7724	15264	61648	122468	-49.66%
			5403	12990	30019	84263	-64.37%	2978	8830	33298	76743	-56.61%
			25130	38599	169530	250770	-32.40%	24021	37996	150952	239262	-36.91%
			221	294	1619	644	151.40%	315	375	2210	746	196.25%
			282	78	793	451	75.83%	279	168	723	447	61.74%
			3700	4018	17965	22513	-20.20%	3632	3322	18158	22833	-20.47%
			269	625	1919	3307	-41.97%	183	589	1924	3451	-44.25%
			40033	64317	250085	411962	-39.29%	36154	57714	235615	389207	-39.46%
			2841	902	7963	2683	196.79%	2623	1108	9098	2679	239.60%
			13756	21554	91848	165567	-44.53%	12635	22786	100184	164086	-38.94%
			3096	4881	23761	31317	-24.13%	2814	4992	23314	32863	-29.06%
			16852	26435	115609	196884	-41.28%	15449	27778	123498	196949	-37.29%



2022

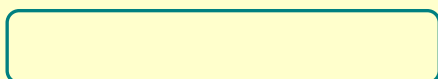
7

11

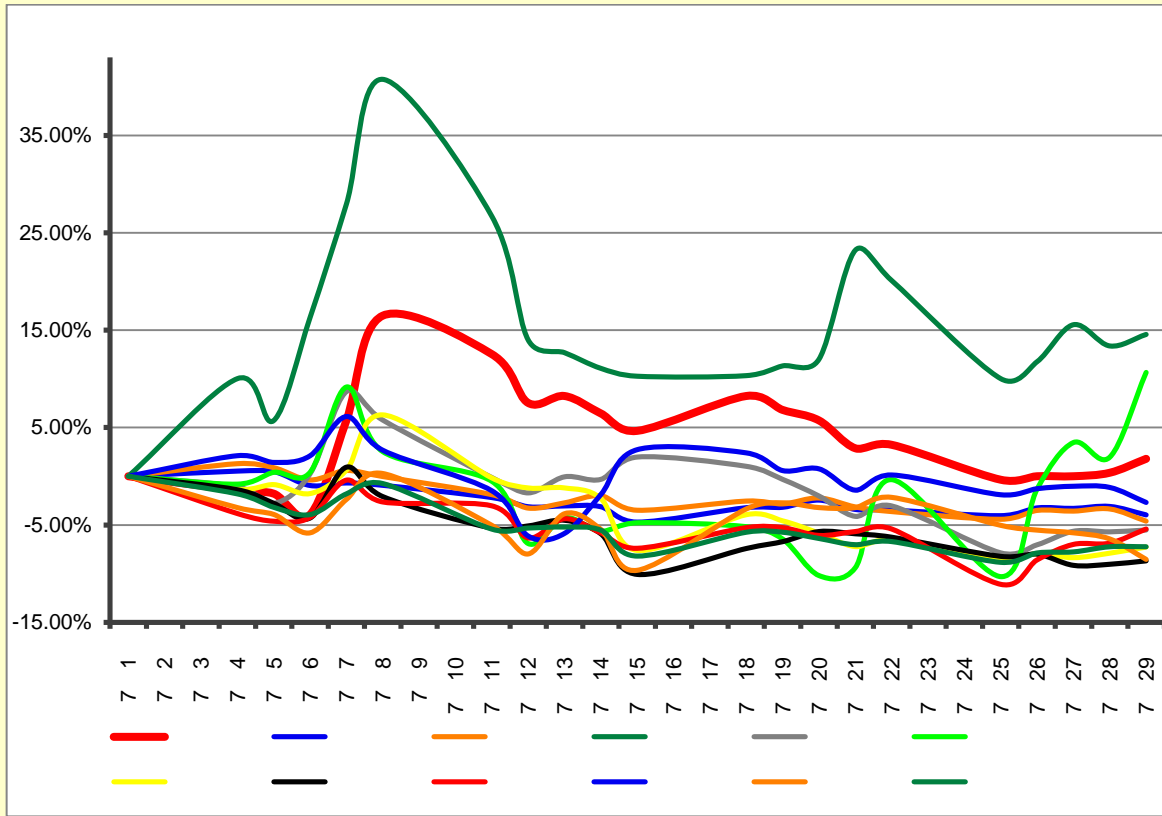
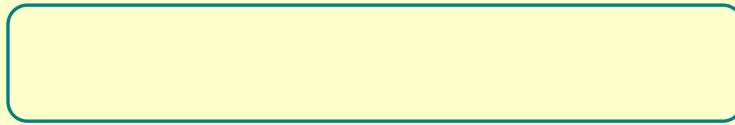
5

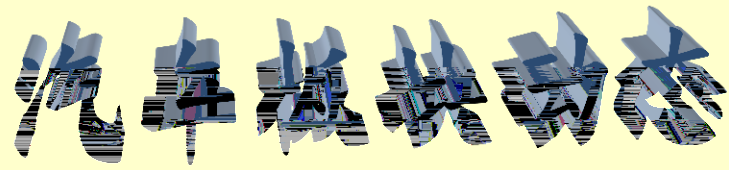
15

3



1		18.41	16.26	0.22	25.58	1.87	8.63	118.08
2		7.89	13.36	0.00				





7 16

BSP

BSP

20

IGBT

MCU

IC

2021

2021

7nm

7 17

7 15

6

8

2022

7

16

6

2019 10 31

2

96%

4%

15 ~25 /

2016

16031

2.3%

122.8%

A

A

30%

500

A

7 18

A

A

3

A

2021 8

2021 11



2022

7

17

2022 3

25.66

3

390

30%

500

1700

**2023**

**IPO**

A

A

30%

500

500

2023

IPO

Pre-IPO

150

850

3

390

4

2.2

794

17.82

4.55%

2000

5

1180

6

24109

182%

2022

8526

1

5

6

100251

134%

10

5

3

68,983

50,827

10

40

2

20

5

2022

20

/

**B**



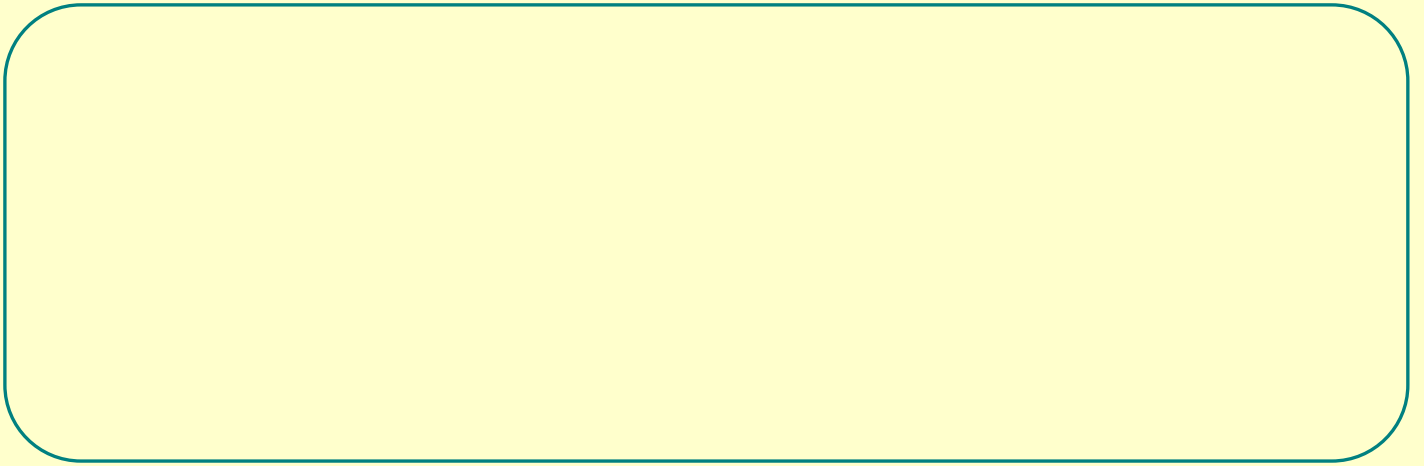
7 29

7 19

4

2021 1

1 2022 12 31



	15465	40404	100221	339230	-70.46%
	13081	18789	71857	105020	-31.58%
	2650	3092	12552	16021	-21.65%
	2234	5356	11567	20588	-43.82%

	483584	328621	2234291	2297285	-2.74%
	207430	173040	1125764	1200847	-6.25%
	234368	165896	1149653	1024559	12.21%
	126595	100163	613842	630237	26.39%
	101186	100664	518525	618211	-16.12%
	40033	64317	250085	411962	-39.29%
	133762	50181	643381	244704	162.92%
	26000	31386	135957	177128	-23.24%
	43108	41111	235210	284986	-17.47%
	15465	40404	100221	339230	-70.46%
	13081	18789	71857	105020	-31.58%
	2650	3092	12552	16021	-21.65%
	2234	5356	11567	20588	-43.82%

	10817	34041	85219	85.03%	294017	-71.02%
	10431	20703	58259	23.30%	134277	-56.61%
	1811	4010	15519	6.60%	34466	-0.55%

	25130	38599	169530	67.79%	250770	-32.40%
	21251	18060	94417	18.21%	118066	-20.03%
	12481	15235	72823	53.56%	99405	-26.74%
	18083	14590	138739	17.05%	138622	0.08%
	12967	16102	87007	36.99%	124009	-29.84%
	12023	16044	65705	65.56%	91483	-28.18%
	4585	6124	14937	14.90%	44902	

	6775	10996	34249	25.19%	53941	-36.51%
	3700	4018	17965	7.18%	22513	-20.20%
	4304	5132	27205	3.34%	29356	-7.33%
	750	2734	5509	7.67%	13243	-58.40%
	416	889	2497	21.59%	4152	-39.86%
	236	333	1308	0.56%	1694	-22.79%

	107914	78881	528226	45.95%	458021	15.33%
	73239	30043	341209	53.03%	131724	159.03%
	44010	25398	206920	25.44%	165512	25.02%
	11516	10791	59126	11.40%	52547	12.52%
	7477	902	20645	8.78%	12840	60.79%
	0	48	50	0.40%	48	4.17%
	308	11	643	0.89%	294	118.71%

	20510	17180	103321	8.99%	76764	34.60%
	581	980	4624	0.72%	15598	-70.36%
	2873	3273	13946	2.27%	23407	-0.40%
	1481	1157	12914	1.59%	6442	100.47%
	430	751	1482	11.81%	4103	-63.88%
	181	582	1626	0.65%	3104	-47.62%

	105944	69835	518106	45.07%	489774	5.78%
	68419	71813	364982	70.39%	447598	-0.18%
	73239	60761	412083	50.66%	487116	-15.40%
	59942	19158	297548	46.25%	97382	205.55%
	17525	16102	87007	36.99%	124009	-29.84%
	6744	5155	28885	21.25%	23782	21.46%
	2220	2341	11020	87.79%	11870	-7.16%
	88	43	291	0.12%	161	80.75%

	2749	2759	15648	1.92%	15304	2.25%
	0	0	2	0.00%	42	-95.24%

	94257	95719	549437	615346	-10.71%
	34132	40123	213969	250014	-14.42%
	16852	26435	115609	196884	-41.28%
	17292	22130	97734	130599	-25.16%
	11369	17335	74185	131605	-43.63%
	2650	761	12502	4202	197.52%



1

2022	3	31				
2020				2020	6	8
			5,000			
				2019		6.32%
	2020	6	15	5,000	5.48	
				2017		
2020					1.4	2.1





2022

7

26

2,744.00

2021

2,700.63

2022

4

26

2021

2021

-4,950.57

-5,063.12

98.02%

2022

4

18

2018

5

1,000

10%

2020

7

135.14

2020

2019

5

2020

5

70

2022

6

8

2021

2021

2020

2020

2.1

2.3

2.21

2013

2022

2022

2.1.1

2.1.4

2.1.5

5.1.4

3

2022

2.1.2

4.3.1

4.3.5

5.1.10

2020 16.2 16.3 16.4 2022

13.2.3

2 2020